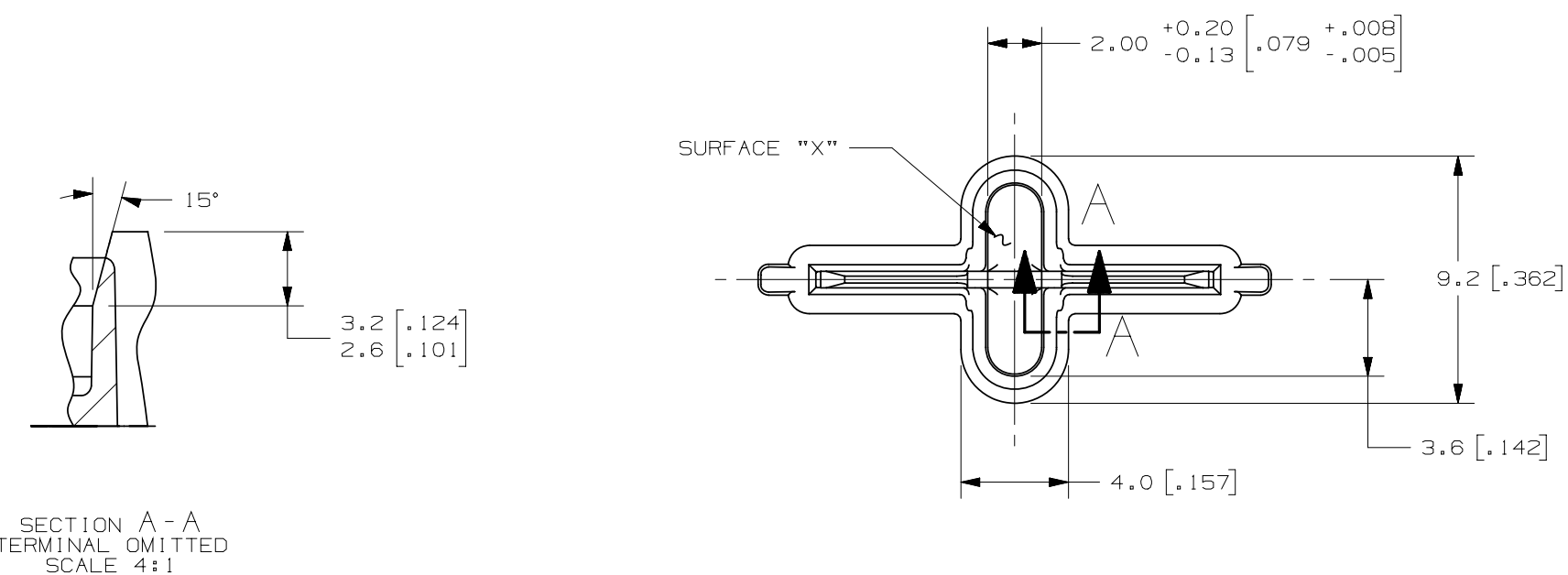
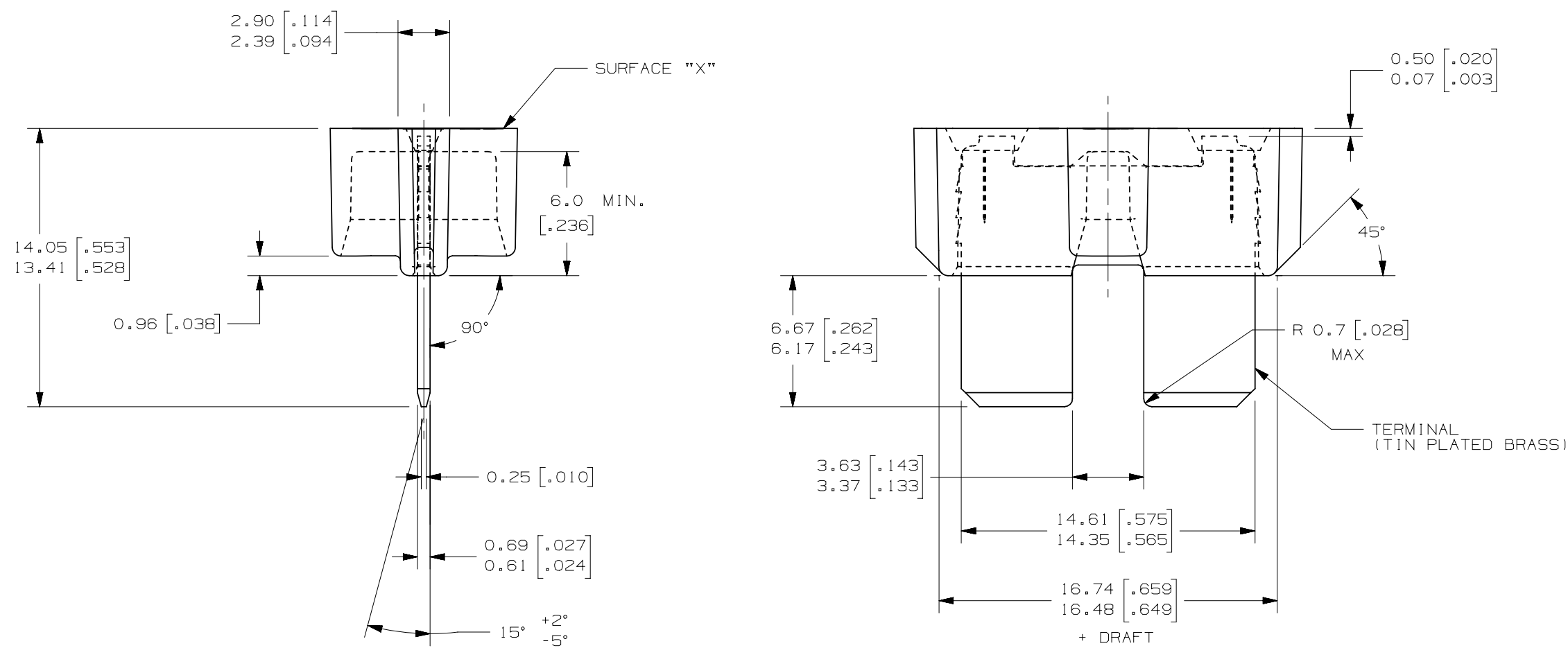
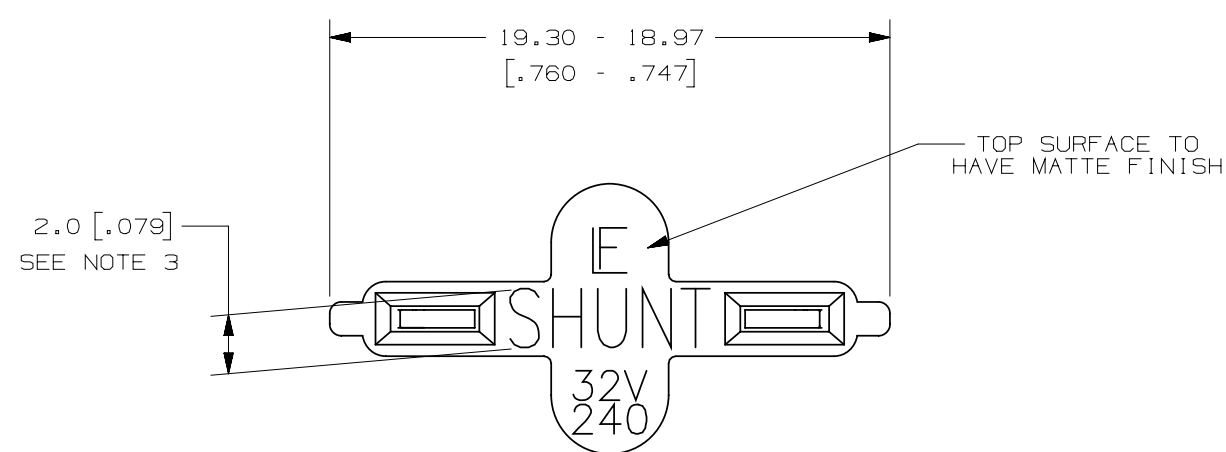


LTR	DATE	REVISION	CHK	APD
A	02/24/10	SA137-RELEASE	OPL	
B	08/03/10	SA569-REMOVE DIMENSION 12.15 (.478)	OPL	



NOTES:

- SHUNT BODY IS TO BE MADE OF A WHITE THERMOPLASTIC MATERIAL, UL94 V-0 RATED.
- ALL CHARACTERS ARE TO BE INDENTED IN TOP SURFACE.
- CHARACTERS "SHUNT" SHALL BE MOLDED INTO PART AND ORIENTATION MAY BE ROTATED 180° FROM INDICATED POSITION SHOWN.
- DIMENSIONS ARE SYMMETRICAL ABOUT CENTER LINES. THE REGISTRATION BETWEEN THE 16.74/16.48 AND 14.35/14.61 DIMENSIONS MUST BE HELD WITHIN ±.13.

NO	COMPONENT NO	DESCRIPTION	QTY/M	U/M
BILL OF MATERIAL				
UNLESS OTHERWISE SPECIFIED, DIMENSIONS ARE IN MILLIMETERS. DIMENSIONS IN BRACKETS [ ] ARE INCHES				
UNLESS OTHERWISE SPECIFIED, DIMENSIONS DO NOT INCLUDE PLATING.				
⊙	DENOTES CRITICAL CHARACTERISTICS.			
CPK	DENOTES CPK DIMENSIONS, -MINIMUM CPK VALUE			
ST	DENOTES A CHARACTERISTIC THAT PROVIDES AN INDICATION OF PROCESS PERFORMANCE. PROCEDURE FOR MEASUREMENT AND TRACKING TO BE DEFINED IN LITTELFUSE INSPECTION INSTRUCTIONS			
CP	DENOTES CP DIMENSIONS, -MINIMUM CP VALUE MUST BE WITHIN THE DIMENSIONAL LIMITATIONS SHOWN ON DRAWING AND INITIALLY LOCATED TO ALLOW FOR MAXIMUM TOOL LIFE			
MATL SPEC SEE NOTE				
COPIES TO				
1	9	18		
2	10	19		
3	12	20		
4	13	21		
5	14	23		
6	15	33		
7	16	43		
8	17	53		
FINISH				
DRW	OPL	DATE 03/09/10	SCALE 4:1	
CHK		DATE	SUPER DR	
APPD		DATE	FINSH GOOD WT	GRAMS/PIECE
TOLERANCE UNLESS OTHERWISE SPECIFIED				
ONE PLACE DEC +/- .3		THREE PLACE DEC +/- .100		
TWO PLACE DEC +/- .25		ANGULAR +/- .1°		
3RD ANGLE PROJECTION TITLE ATO SHUNT ASSEMBLY				
Littelfuse		REVISION B	DRWG. NO. 02400094P-WH	OUTLINE
DES PLAINES, ILLINOIS 60016				

METRIC

CAD GENERATED DRAWING - NO PENCIL CHANGES ALLOWED