

**PLEASE CHECK WWW.MOLEX.COM FOR LATEST PART INFORMATION**

**Part Number:** [0310731010](#)  
**Status:** **Active**  
**Overview:** [hdac 64 single row](#)  
**Description:** 2.54mm (.100") H-DAC 64™, 6 Way Receptacle Assembly, Single-Row, Polarization A

**Documents:**

[Drawing \(PDF\)](#) [Product Specification PS-31100-0001 \(PDF\)](#)  
[Application Specification \(PDF\)](#) [RoHS Certificate of Compliance \(PDF\)](#)  
[Product Specification PS-31067-0001 \(PDF\)](#)

**General**

Product Family Crimp Housings  
 Series [31073](#)  
 Comments Polarization Option A, Black  
 Overview [hdac 64 single row](#)  
 Product Name H-DAC 64™

**Physical**

Circuits (maximum) 6  
 Circuits Detail 6  
 Color - Resin Black, White  
 Gender Female  
 Glow-Wire Compliant No  
 Keying to Mating Part None  
 Lock to Mating Part Yes  
 Material - Resin Modified Polystyrene, Polyester  
 Number of Rows 1  
 Packaging Type Bag  
 Panel Mount No  
 Pitch - Mating Interface (in) 0.100 In  
 Pitch - Mating Interface (mm) 2.54 mm  
 Pitch - Term. Interface (in) 0.100 In  
 Pitch - Term. Interface (mm) 2.54 mm  
 Polarized to Mating Part Yes  
 Ports 1  
 Stackable No  
 Temperature Range - Operating -40°C to +100°C

**Electrical**

Current - Maximum per Contact 11A, 9A

**Material Info**

**Reference - Drawing Numbers**

Application Specification AS-31067-100  
 Packaging Specification PK-30907-737, PK-31301-076  
 Product Specification PS-31067-0001, PS-31100-0001  
 Sales Drawing SD-31109-003



**EU RoHS**

**ELV and RoHS  
 Compliant**  
**REACH SVHC  
 Contains SVHC: No**  
**Halogen-Free  
 Status**

**China RoHS**



**Need more information on product  
 environmental compliance?**

Email [productcompliance@molex.com](mailto:productcompliance@molex.com)  
 For a multiple part number RoHS Certificate of  
 Compliance, [click here](#)

Please visit the [Contact Us](#) section for any  
 non-product compliance questions.

**Search Parts in this Series**

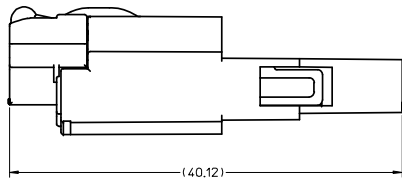
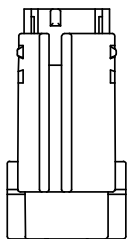
[31073Series](#)

**Mates With**

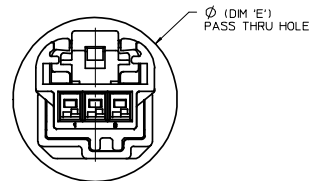
H-DAC 64™, 6 Way Male Housing  
 Assembly [310731040](#) , [310731070](#)

**Use With**

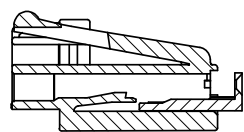
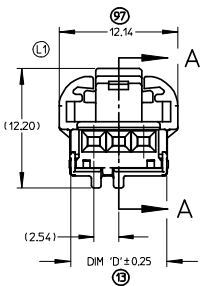
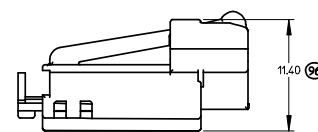
See Product Spec



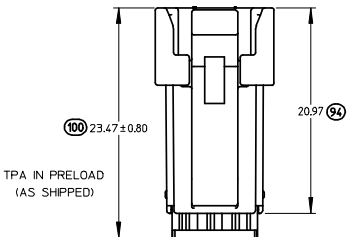
OVERALL MATED LENGTH



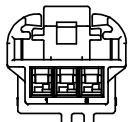
MALE AND FEMALE ASSEMBLY  
PASS THRU VIEW  
(CAD GENERATED)



SECTION A-A  
SCALE 4:1



TPA IN PRELOAD  
(AS SHIPPED)



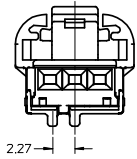
WIRE SIDE

- NOTES:
1. MATERIAL: HOUSING: SPS GLASS FILLED, COLOR SEE CHART.  
TPA: PBT
  2. PRODUCT SPECIFICATIONS - IN-LINE MATING INTERFACE: PS-31067-0001.  
- DIRECT CONNECT MATING INTERFACE: PS-31100-0001
  3. PACKAGING SPECIFICATION: DRAWING PK-30907-737.
  4. MATES WITH: SEE SALES DRAWINGS SD-31100-003 (MALE IN-LINE),  
SD-31197-003 (RIGHT ANGLE HEADER), SD-31101-114 (VERTICAL  
"WINGED" HEADER), AND SD-31206-003 (VERTICAL HEADER).
  5. TERMINAL PLATING: TIN (Sn) OVERALL, BRITE FINISH.  
THICKNESS = 15 MICROMETER MINIMUM,  
NICKEL (Ni) UNDERPLATE OVERALL.
  6. PACKAGING: PLEASE REFERENCE MOLEX SPECIFICATION PS-34646-001,  
AVAILABLE AT WWW.MOLEX.COM. (REFERENCE: TPAs THAT ARE FOUND IN  
SEATED (FINAL LOCK) POSITION)
  7. APPLICATION SPECIFICATION: AS-31067-100.

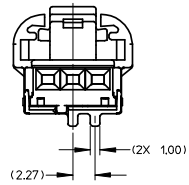
<b>ENTER DESCRIPTION</b> IEC NO. UAU2008-0767 DRAWN: MACHUGA 2008/07/08 CHECKED: CHYKOBLOCK 2008/07/09 APPR: SMARCEAU 2008/07/09	<b>QUALITY SYMBOLS</b> ▽=0 ▽=0	<b>GENERAL TOLERANCES (UNLESS SPECIFIED)</b>		<b>DIMENSION STYLE</b> MM ONLY	SCALE 1:1	DESIGN UNITS METRIC	THIRD ANGLE PROJECTION									
		4 PLACES ± --- ± ---	3 PLACES ± --- ± ---	2 PLACES ± 0.13 ± ---	1 PLACE ± 0.25 ± ---	ANGLAR ± 1/2°	DRAFT WHERE APPLICABLE MUST REMAIN WITHIN DIMENSIONS	DRAWN BY BDLCK01	DATE 6/22/2007	CHECKED BY CDILLON	DATE 6/22/2007	APPROVED BY	DATE	MATERIAL NO. SEE CHART	DOCUMENT NO. SD-31109-003	SHEET NO. 1 OF 4
		MOLEX INCORPORATED							FEMALE ASSEMBLY CHARTED SALES DRAWING							
		THIS DRAWING CONTAINS INFORMATION THAT IS PROPRIETARY TO MOLEX INCORPORATED AND SHOULD NOT BE USED WITHOUT WRITTEN PERMISSION														

FEMALE VIEWED FROM MATING SIDE

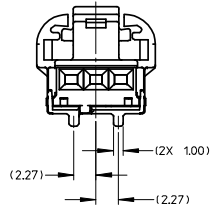
3 WAY POLARIZATION 'A'



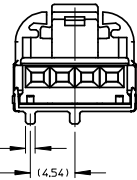
3 WAY POLARIZATION 'B'



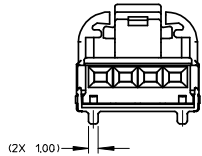
3 WAY POLARIZATION 'C'



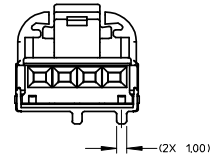
4 WAY POLARIZATION 'A'



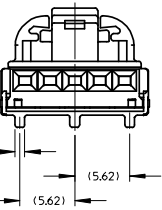
4 WAY POLARIZATION 'B'



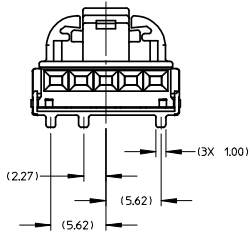
4 WAY POLARIZATION 'C'



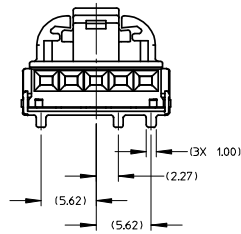
5 WAY POLARIZATION 'A'



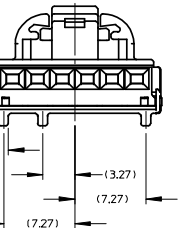
5 WAY POLARIZATION 'B'



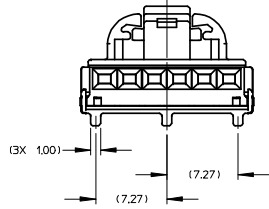
5 WAY POLARIZATION 'C'



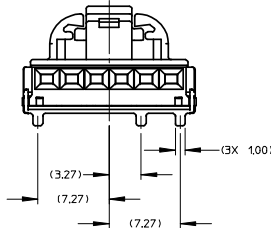
6 WAY POLARIZATION 'A'



6 WAY POLARIZATION 'B'



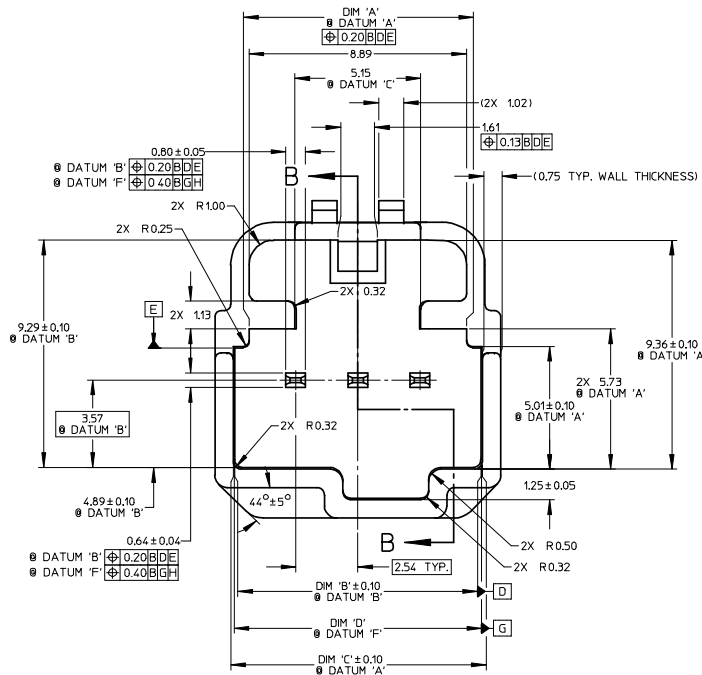
6 WAY POLARIZATION 'C'



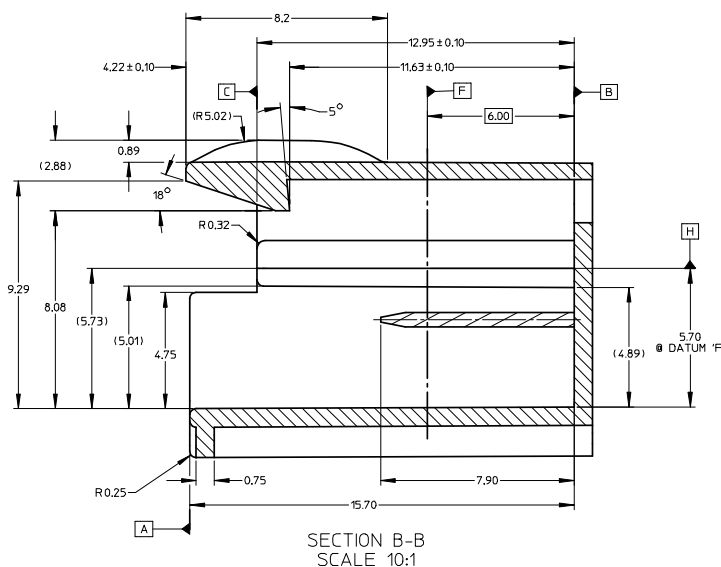
BILL OF MATERIALS						MATING ASSEMBLIES PART NUMBERS					
ASSEMBLY PART NUMBER	DESCRIPTION	PART NUMBER	DESCRIPTION	COLOR	DIM 'D'	DIM 'E'	INLINE MALE ASSEMBLY W/O XMAS SLOT	INLINE MALE ASSEMBLY W/ XMAS SLOT	RIGHT ANGLE MALE HEADER ASSEMBLY	VERTICAL MALE HEADER ASSEMBLY	VERTICAL MALE WINGED HEADER ASSY
31067-1010	3 WAY FEMALE ASSEMBLY POLARIZATION 'A'	31111-0030	FEMALE HOUSING	BLACK	9.80	16.76	31067-1040	31067-1070	31100-0030 NOT TOOLED	31101-0030 NOT TOOLED	TBD
		31113-0030	TPA	NATURAL (WHITE)							
31067-1011	3 WAY FEMALE ASSEMBLY POLARIZATION 'B'	31111-0031	FEMALE HOUSING	GRAY	9.80	16.76	31067-1041	31067-1071	31100-0031 NOT TOOLED	31101-0031 NOT TOOLED	TBD
		31113-0030	TPA	NATURAL (WHITE)							
31067-1012	3 WAY FEMALE ASSEMBLY POLARIZATION 'C'	31111-0032	FEMALE HOUSING	BROWN	9.80	16.76	31067-1042	31067-1072	31100-0032 NOT TOOLED	31101-0032 NOT TOOLED	TBD
		31113-0030	TPA	NATURAL (WHITE)							
31068-1010	4 WAY FEMALE ASSEMBLY POLARIZATION 'A'	31157-0040	FEMALE HOUSING	BLACK	12.34	18.25	31068-1040	31068-1070	31100-0040	31101-0040	31101-1140
		31158-0040	TPA	NATURAL (WHITE)							
31068-1011	4 WAY FEMALE ASSEMBLY POLARIZATION 'B'	31157-0041	FEMALE HOUSING	GRAY	12.34	18.25	31068-1041	31068-1071	31100-0041	31101-0041	31101-1240
		31158-0040	TPA	NATURAL (WHITE)							
31068-1012	4 WAY FEMALE ASSEMBLY POLARIZATION 'C'	31157-0042	FEMALE HOUSING	BROWN	12.34	18.25	31068-1042	31068-1072	31100-0042	31101-0042	31101-1340
		31158-0040	TPA	NATURAL (WHITE)							
31072-1010	5 WAY FEMALE ASSEMBLY POLARIZATION 'A'	31160-0050	FEMALE HOUSING	BLACK	14.88	20.25	31072-1040	31072-1070	31100-0050 NOT TOOLED	31101-0050 NOT TOOLED	TBD
		31161-0050	TPA	NATURAL (WHITE)							
31072-1011	5 WAY FEMALE ASSEMBLY POLARIZATION 'B'	31160-0051	FEMALE HOUSING	GRAY	14.88	20.25	31072-1041	31072-1071	31100-0051 NOT TOOLED	31101-0051 NOT TOOLED	TBD
		31161-0050	TPA	NATURAL (WHITE)							
31072-1012	5 WAY FEMALE ASSEMBLY POLARIZATION 'C'	31160-0052	FEMALE HOUSING	BROWN	14.88	20.25	31072-1042	31072-1072	31100-0052 NOT TOOLED	31101-0052 NOT TOOLED	TBD
		31161-0050	TPA	NATURAL (WHITE)							
31073-1010	6 WAY FEMALE ASSEMBLY POLARIZATION 'A'	31163-0060	FEMALE HOUSING	BLACK	17.42	22.75	31073-1040	31073-1070	31100-0060 NOT TOOLED	31101-0060 NOT TOOLED	TBD
		31164-0060	TPA	NATURAL (WHITE)							
31073-1011	6 WAY FEMALE ASSEMBLY POLARIZATION 'B'	31163-0061	FEMALE HOUSING	GRAY	17.42	22.75	31073-1041	31073-1071	31100-0061 NOT TOOLED	31101-0061 NOT TOOLED	TBD
		31164-0060	TPA	NATURAL (WHITE)							
31073-1012	6 WAY FEMALE ASSEMBLY POLARIZATION 'C'	31163-0062	FEMALE HOUSING	BROWN	17.42	22.75	31073-1042	31073-1072	31100-0062 NOT TOOLED	31101-0062 NOT TOOLED	TBD
		31164-0060	TPA	NATURAL (WHITE)							

ENTER DESCRIPTION IEC NO. UAU2008-0767 DRAWN/TMACHUGA 2008/07/08 CHYK/BDLCK 2008/07/09 APPR./SMARCEAU 2008/07/09	QUALITY SYMBOLS ▽=0 ▽=0	GENERAL TOLERANCES (UNLESS SPECIFIED)		DIMENSION STYLE MM ONLY	SCALE 1:1	DESIGN UNITS METRIC	THIRD ANGLE PROJECTION	
		4 PLACES ± mm INCH 3 PLACES ± --- ± --- 2 PLACES ± 0.13 ± --- 1 PLACE ± 0.25 ± ---	DRAWN BY DATE BDLCK01 6/22/2007		TITLE FEMALE ASSEMBLY CHARTED SALES DRAWING			
		DRAFT WHERE APPLICABLE MUST REMAIN WITHIN DIMENSIONS		MATERIAL NO. SEE CHART		DOCUMENT NO. SD-31109-003		SHEET NO. 2 OF 4
		THIS DRAWING CONTAINS INFORMATION THAT IS PROPRIETARY TO MOLEX INCORPORATED AND SHOULD NOT BE USED WITHOUT WRITTEN PERMISSION						

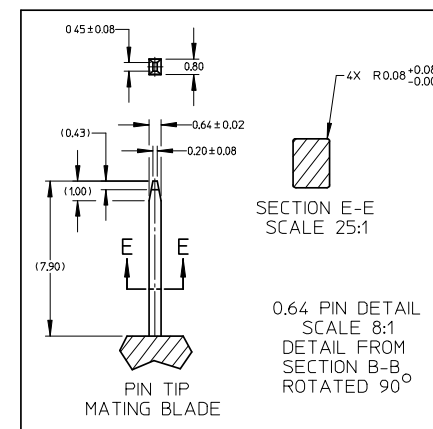
# REFERENCE ONLY



**MATING INTERFACE DETAIL**  
SCALE 10:1  
RECOMMENDED MATING MATERIAL: SPS, 30% GLASS FILLED.



**SECTION B-B**  
SCALE 10:1



**SECTION E-E**  
SCALE 25:1

**0.64 PIN DETAIL**  
SCALE 8:1  
DETAIL FROM SECTION B-B  
ROTATED 90°

**PIN TIP**  
MATING BLADE

## RECOMMENDED DIRECT CONNECT INFO FOR MATING FEMALE PARTS ONLY

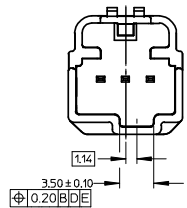
### DIMENSIONS FOR DIRECT CONNECT

CIRCUIT SIZE	DIM 'A'	DIM 'B'	DIM 'C'	DIM 'D'
3	8.89	10.05	10.19	10.11
4	11.20	12.59	12.73	12.65
5	13.74	15.13	15.27	15.19
6	16.28	17.67	17.81	17.73

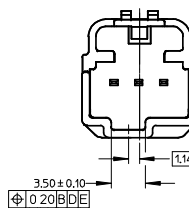
<b>ENTER DESCRIPTION</b> IEC NO. UAU2008-0767 DRAWN BY: MACHUGA 2008/07/08 CHECKED BY: CHYK/BD/CK 2008/07/09 APPR: S/MARCEAU 2008/07/09 REV:	<b>QUALITY SYMBOLS</b> ▽=0 ▽=0	<b>GENERAL TOLERANCES (UNLESS SPECIFIED)</b> mm INCH 4 PLACES ±--- ±--- 3 PLACES ±--- ±--- 2 PLACES ±0.13 ±--- 1 PLACE ±0.25 ±--- ANGULAR ±1/2°	<b>DIMENSION STYLE</b> MM ONLY DRAWN BY: BDLCK01' DATE: 6/22/2007 CHECKED BY: DATE: CDILLON 6/22/2007 APPROVED BY: DATE:	SCALE 1:1 DESIGN UNITS METRIC THIRD ANGLE PROJECTION	TITLE <b>FEMALE ASSEMBLY CHARTED SALES DRAWING</b>
	DRAFT WHERE APPLICABLE MUST REMAIN WITHIN DIMENSIONS		MATERIAL NO. SEE CHART DOCUMENT NO. SD-31109-003	MOLEX INCORPORATED	SHEET NO. 3 OF 4
	THIS DRAWING CONTAINS INFORMATION THAT IS PROPRIETARY TO MOLEX INCORPORATED AND SHOULD NOT BE USED WITHOUT WRITTEN PERMISSION				

# REFERENCE ONLY

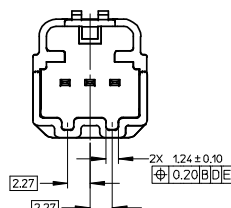
3 WAY POLARIZATION "A"



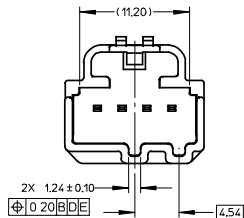
3 WAY POLARIZATION "B"



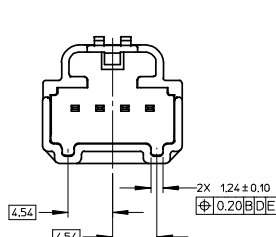
3 WAY POLARIZATION "C"



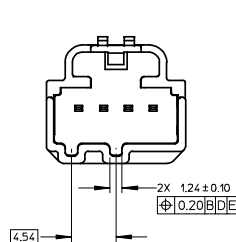
4 WAY POLARIZATION "A"



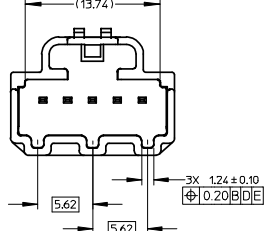
4 WAY POLARIZATION "B"



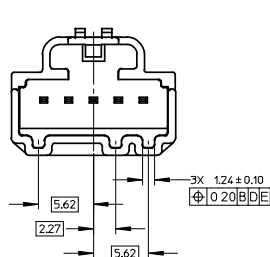
4 WAY POLARIZATION "C"



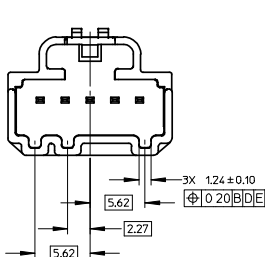
5 WAY POLARIZATION "A"



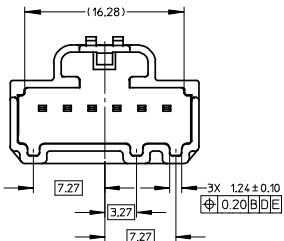
5 WAY POLARIZATION "B"



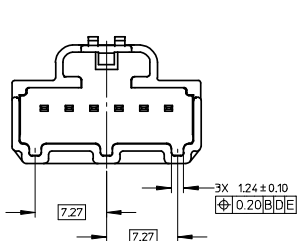
5 WAY POLARIZATION "C"



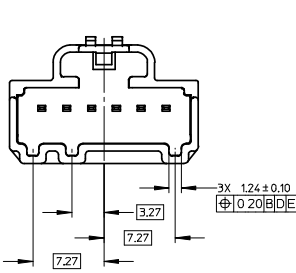
6 WAY POLARIZATION "A"



6 WAY POLARIZATION "B"



6 WAY POLARIZATION "C"



<b>ENTER DESCRIPTION</b> IEC NO: UAU2008-0767 DRAWN: MACHIGA 2008/07/08 CHKD: BDI CK 2008/07/09 APPR: SMARCEAU 2008/07/09 REV: DESCRIPTION	<b>QUALITY SYMBOLS</b> ▽=0 ▽=0		<b>GENERAL TOLERANCES (UNLESS SPECIFIED)</b> mm INCH		<b>DIMENSION STYLE</b> MM ONLY		SCALE 4:1 DESIGN UNITS METRIC		THIRD ANGLE PROJECTION	
	4 PLACES ± --- ± ---	3 PLACES ± --- ± ---	2 PLACES ± 0.13 ± ---	1 PLACE ± 0.25 ± ---	DRAWN BY BDI CK01' DATE 6/22/2007 CHECKED BY CDILLON DATE 6/22/2007 APPROVED BY DATE		TITLE FEMALE ASSEMBLY CHARTED SALES DRAWING		MATERIAL NO. SEE CHART DOCUMENT NO. SD-31109-003	
	DRAFT WHERE APPLICABLE MUST REMAIN WITHIN DIMENSIONS				ANGULAR ±1/2°		SHEET NO. 4 OF 4		MOLEX INCORPORATED	
	THIS DRAWING CONTAINS INFORMATION THAT IS PROPRIETARY TO MOLEX INCORPORATED AND SHOULD NOT BE USED WITHOUT WRITTEN PERMISSION									