

**PLEASE CHECK WWW.MOLEX.COM FOR LATEST PART INFORMATION**

**Part Number:** [0008520112](#)  
**Status:** **Active**  
**Overview:** [kk](#)  
**Description:** Trifurcon™ Crimp Terminal 6838, 18-20 AWG, Reel, Phosphor Bronze Tin (Sn)

**Documents:**

[Drawing \(PDF\)](#) [RoHS Certificate of Compliance \(PDF\)](#)  
[Product Specification PS-40-02 \(PDF\)](#)

**General**

Product Family	Crimp Terminals
Series	6838
Crimp Quality Equipment	Yes
Overview	<a href="#">kk</a>
Product Name	Trifurcon™

**Physical**

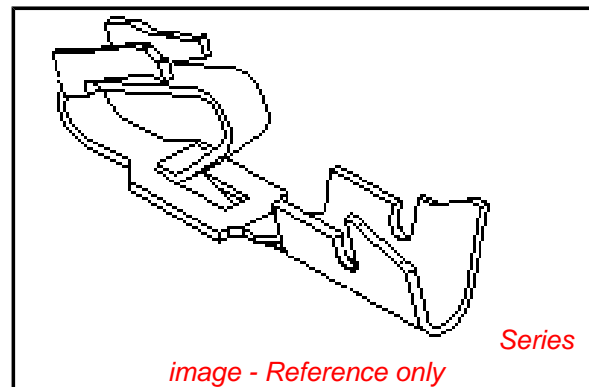
Gender	Female
Material - Metal	Phosphor Bronze
Material - Plating Mating	Tin
Material - Plating Termination	Tin
Packaging Type	Reel
Plating min: Mating (µin)	100
Plating min: Mating (µm)	2.50
Plating min: Termination (µin)	100
Plating min: Termination (µm)	2.50
Termination Interface: Style	Crimp or Compression
Wire Insulation Diameter	2.79mm (.110") max.
Wire Size AWG	18, 20
Wire Size mm²	N/A

**Material Info**

Old Part Number	6838-A(P909)
-----------------	--------------

**Reference - Drawing Numbers**

Packaging Specification	PK-6838-001
Product Specification	PS-40-02
Sales Drawing	SD-6838, SD-6838-001



**EU RoHS**

**ELV and RoHS  
Compliant**  
**REACH SVHC  
Contains SVHC: No**  
**Halogen-Free  
Status**

**China RoHS**



**Need more information on product  
environmental compliance?**

Email [productcompliance@molex.com](mailto:productcompliance@molex.com)  
 For a multiple part number RoHS Certificate of Compliance, [click here](#)

Please visit the [Contact Us](#) section for any non-product compliance questions.

**Search Parts in this Series**

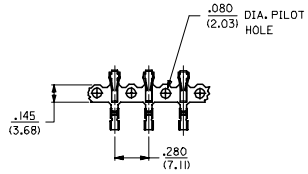
6838Series

**Application Tooling | [FAQ](#)**

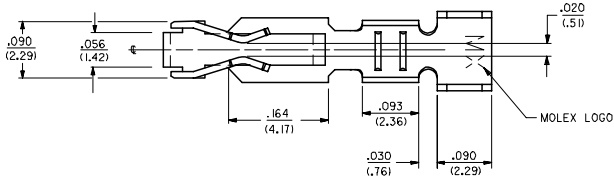
*Tooling specifications and manuals are found by selecting the products below. Crimp Height Specifications are then contained in the Application Tooling Specification document.*

**Global**

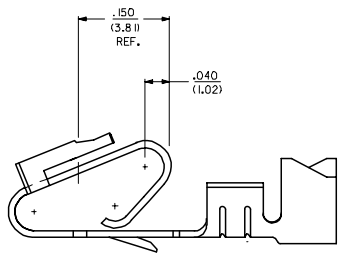
Description	Product #
Terminator Die	<a href="#">0011402096</a>
Hand Crimper	<a href="#">0638117500</a>
FineAdjust™	<a href="#">0639007200</a>
Applicator for KK® and Trifurcon™ Crimp Terminal	



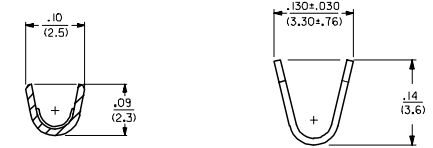
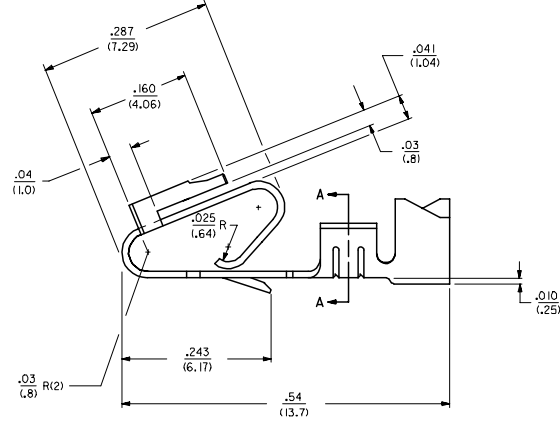
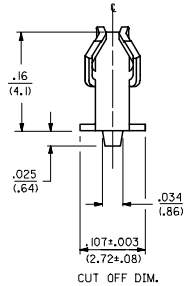
CARRIER STRIP DETAIL



- NOTES:
1. MATERIAL; SEE LEGEND
  2. FINISH:
    - \*909 - OVERALL HOT TIN DIF: .000100/(0.00254) MIN.
    - 102 - OVERALL TIN: .000200/(0.00508) MIN.
    - OVERALL COPPER: .000100/(0.00254) MIN.
    - 132 - OVERALL TIN: .000200/(0.00508) MIN.
    - OVERALL COPPER: .000200/(0.00508) MIN.
    - 503 - OVERALL HARD GOLD: .000030/(0.00076) MIN.
    - OVERALL NICKEL: .000050/(0.00127) MIN.
    - 550 - SELECT HARD GOLD: .000015/(0.00038) MIN.
    - OVERALL NICKEL: .000030/(0.00076) MIN.
    - OVERALL HARD GOLD FLASH: .000002/(0.00005) MIN.
    - 555 - SELECT HARD GOLD: .000015/(0.00038) MIN.
    - OVERALL NICKEL: .000030/(0.00076) MIN.
    - 558 - SELECT HARD GOLD: .000030/(0.00076) MIN.
    - OVERALL NICKEL: .000050/(0.00127) MIN.
    - OVERALL HARD GOLD FLASH: .000002/(0.00005) MIN.
    - 561 - SELECT HARD GOLD: .000030/(0.00076) MIN.
    - OVERALL NICKEL: .000050/(0.00127) MIN.
  - \* THE PRIMARY SHIPPING CARTON WILL BE LABELED "COMPLIANT TO ROHS DIRECTIVE 2002/95/EC AND ELV ANNEX II OF DIRECTIVE 2000/53/EC." CARTONS WITHOUT THIS LABEL MAY CONTAIN PRODUCT WITH TIN-LEAD PLATING.
  3. PRODUCT SPECIFICATION: PS-40-02
  4. PACKAGING SPECIFICATION: CHAIN FORM SEE PK-6838-001
  5. TERMINAL FOR USE IN HOUSING NOS. 6442 AND 41695
  6. THIS PART WITH CRIMP FOR 22-26 AWG. WIRE. SEE DWG. NO. 7258
  7. CRIMP FOR 18 TO 20 GA. WIRE WITH MAX. INSULATION DIA. OF .100/(2.79). STRIP LENGTH OF .125/100 / (3.18/2.54)
  8. DIMENSIONS GIVEN ACROSS CENTERLINES ARE SYMMETRICAL ABOUT THOSE CENTERLINES WITHIN HALF THE TOTAL TOLERANCE.
  9. THIS PART CONFORMS TO CLASS B REQUIREMENTS OF COSMETIC SPECIFICATION PS-45499-002.



SELECTIVE PLATING LOCATION



SECTION A-A

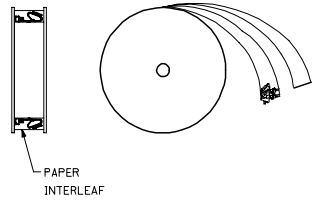
LEGEND: 6838- ( )

MATERIAL:  
 (.27)/.0106 THK  
 BLANK=BRASS  
 A=PHOS BRONZE

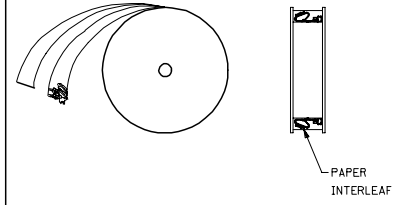
WINDING  
 A= PER DETAIL A  
 BLANK= PER DETAIL B

FORM  
 BLANK= CHAIN  
 L= LOOSE

PLATING  
 SEE NOTE 2



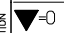
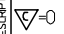

WINDING DETAIL "A"

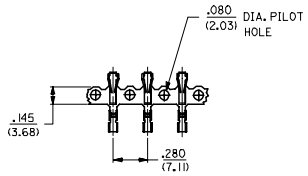


WINDING DETAIL "B"

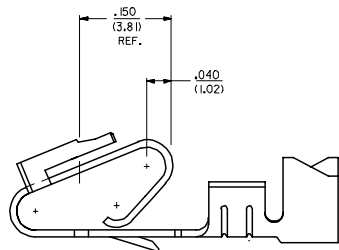
ADD NOTE 9 EC NO: UCP2008-0005 DRAWN BY: 2007/07/03 CHECKED BY: 2007/07/09 APPROVED BY: 2007/07/09 APPR: ESM:TH	QUALITY SYMBOLS ▽=0 ▽=0	GENERAL TOLERANCES (UNLESS SPECIFIED)		DIMENSION STYLE		SCALE	DESIGN UNITS	THIRD ANGLE PROJECTION		
			mm	INCH	IN/MM		---	INCH		
		4 PLACES ± --- ± ---			DRAWN BY	DATE	TITLE			
		3 PLACES ± --- ± .010			GUZIK	11/15/89	TRIFURCON TERMINAL			
2 PLACES ± 0.25 ± .015			CHECKED BY	DATE	CRIMP TYPE, .156 CENTERS					
1 PLACE ± 0.36 ± ---			PATEL	11/15/89	18 TO 20 AWG WIRE					
ANGULAR ±1/2°			APPROVED BY	DATE	MOLEX INCORPORATED					
			LENZ	11/15/89						
DRAFT WHERE APPLICABLE MUST REMAIN WITHIN DIMENSIONS		MATERIAL NO.		DOCUMENT NO.		SHEET NO.				
		SEE CHART		SD-6838		1 OF 2				
THIS DRAWING CONTAINS INFORMATION THAT IS PROPRIETARY TO MOLEX INCORPORATED AND SHOULD NOT BE USED WITHOUT WRITTEN PERMISSION										

6838-(*)**		6838-A(*)**													
PART NO.	ENG. NO.	PART NO.	ENG. NO.	PART NO.	ENG. NO.	PART NO.	ENG. NO.	PART NO.	ENG. NO.	PART NO.	ENG. NO.	PART NO.	ENG. NO.	PART NO.	ENG. NO.
08-50-0187	6838-(P909)														
08-50-0189	6838-(P909)L	08-58-0187	6838-A(P558)												
08-50-0275	6838-(P909)-A	08-58-0189	6838-A(P558)L												
08-50-0026	6838-(P102)	08-60-0001	6838-A(132)												
	6838-(P102)L	08-60-0002	6838-A(132)L												
08-50-0028	6838-(102)	08-58-0102	6838-A(558)												
08-50-0029	6838-(102)L		6838-A(558)L												
		08-58-0108	6838-A(503)												
		08-58-0109	6838-A(503)L												
		08-52-0112	6838-A(P909)												
		08-52-0113	6838-A(P909)L												
		08-50-0024	6838-A(102)												
		08-50-0251	6838-A(102)L												
		08-58-0105	6838-A(P555)												
		08-58-0106	6838-A(P555)L												
		08-58-0110	6838-A(P561)												
		08-58-0111	6838-A(P561)L												
		08-58-0118	6838-A(561)												
		08-58-0119	6838-A(561)L												
		08-58-0131	6838-A(550)												
		08-58-0132	6838-A(550)L												

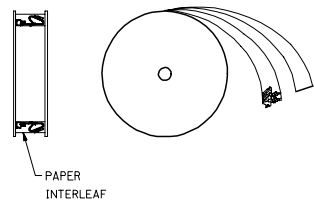
<b>UPDATE TITLE BLOCK</b> DEC NO: UCP2008-0005 2007/07/03 DRAWN BY: JORWANDARR 2007/07/09 CHECKED BY: CHUCK BELL 2007/07/09 APPROVED BY: APPRESMITH 2007/07/09	<b>QUALITY SYMBOLS</b>  = 0  = 0	<b>GENERAL TOLERANCES (UNLESS SPECIFIED)</b>		<b>DIMENSION STYLE</b> IN/MM		SCALE ---	DESIGN UNITS INCH	 <b>THIRD ANGLE PROJECTION</b>
		4 PLACES ± --- ± --- 3 PLACES ± --- ± --- 2 PLACES ± --- ± --- 1 PLACE ± --- ± ---	mm INCH	DRAWN BY GUZIK DATE 11/15/89	TITLE TRIFURCON TERMINAL CRIMP TYPE, .156 CENTERS 18 TO 20 AWG WIRE			
		ANGULAR ±1/2°		CHECKED BY PATEL DATE 11/15/89	APPROVED BY LENZ DATE 11/15/89			
		DRAFT WHERE APPLICABLE MUST REMAIN WITHIN DIMENSIONS		MATERIAL NO. SEE CHART	DOCUMENT NO. SD-6838	SHEET NO. 2 OF 2		



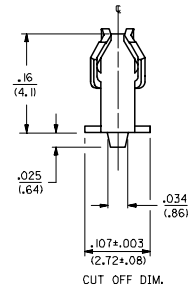
CARRIER STRIP DETAIL



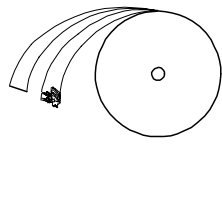
SELECTIVE PLATING LOCATION



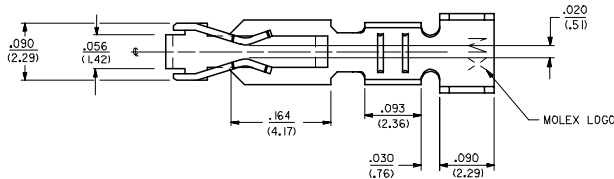
WINDING DETAIL 'A'



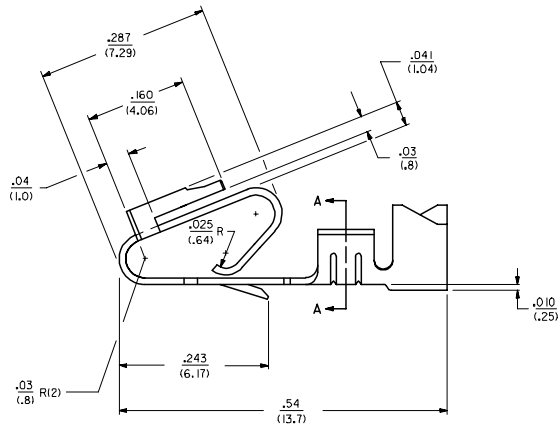
CUT OFF DIM.



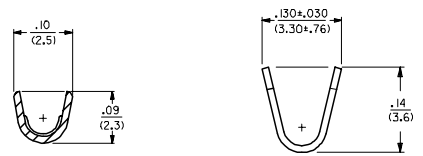
WINDING DETAIL 'B'



MOLEX LOGO



- NOTES:
2. CRIMP FOR 18 TO 20 GA. WIRE WITH MAX. INSULATION DIA. OF .110/(2.79), STRIP LENGTH OF .125/.100 / (3.18/2.54)
  3. DIMENSIONS GIVEN ACROSS CENTERLINES ARE SYMMETRICAL ABOUT THOSE CENTERLINES WITHIN HALF THE TOTAL TOLERANCE.
  4. PARTS CONFORM TO PRODUCT SPEC. 40-02.
  5. THIS PART WITH CRIMP FOR 22-26 AWG. WIRE SEE DWG. NO. 7258.
  6. TERMINAL FOR USE IN HOUSING NO'S. 6442 AND 41695.



SECTION A-A

LEGEND: 6838- (IP909) • • •  
 MATERIAL: (.27)/.0106 THK  
 BLANK=BRASS  
 WINDING  
 BLANK= PER DETAIL B  
 FORM  
 BLANK= CHAIN  
 PLATING PER SDES-88  
 (909) • OVERALL HOT TIN DIP: 2.54 MICROMETERS MIN.

\*THE PRIMARY SHIPPING CARTON WILL BE LABELED \*COMPLIANT TO ROHS DIRECTIVE 2002/95/EC AND ELV ANNEX II OF DIRECTIVE 2000/53/EC.\* CARTONS WITHOUT THIS LABEL MAY CONTAIN PRODUCT WITH TIN-LEAD PLATING.

CHANGE TO ME10 EC NO: UCP2005-0959 DRAWN: DRW/ADRIAN/101 2004/11/16 CHKD: SAN/EC 2004/11/16 APPR: MM/GB/LLS 2004/11/16/7	QUALITY SYMBOLS	GENERAL TOLERANCES (UNLESS SPECIFIED)		DIMENSION STYLE		SCALE	DESIGN UNITS	THIRD ANGLE PROJECTION
	▽=0	mm	INCH	IN/MM		---	INCH	
	▽=0	4 PLACES ± .010	± .010	DRAWN BY	DATE	TITLE		
		3 PLACES ± .025	± .015	JJS	07/29/04	TRIFURCON TERMINAL CRIMP TYPE, .156 CENTERS 18 TO 20 AWG WIRE		
	2 PLACES ± .036	± .030	KSS	07/29/04	MATERIAL NO. 050291639			
	1 PLACE ± .036	± .030	APPROVED BY	DATE	SD-6838-001			
		ANGULAR ±1/2°	YM	07/29/04	SHEET NO. 1 OF 1			
			DRAFT WHERE APPLICABLE MUST REMAIN WITHIN DIMENSIONS		THIS DRAWING CONTAINS INFORMATION THAT IS PROPRIETARY TO MOLEX INCORPORATED AND SHOULD NOT BE USED WITHOUT WRITTEN PERMISSION			